

## MATERIAL SAFETY DATA SHEET

### KRESO

#### 1 . CHEMICAL PRODUCT AND COMPANY IDENTIFICATION

**Trade Name:** KRESO

**Common name:** Kresoxim-Methyl

**CAS code:** 143390-89-0

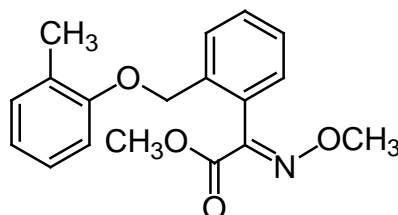
**Chemical name:** methyl (*E*)-methoxyimino[2-(*o*-tolylloxymethyl)phenyl]acetate

**Chemical family:** Oximinoacetate

**Molecular weight:** 313.4

**Chemical formulation:** C<sub>18</sub>H<sub>19</sub>NO<sub>4</sub>

**Chemical structure:**



#### 2 . COMPOSITION, INFORMATION ON INGREDIENTS

CONTENTS	TYPE OF FORMULATIONS SC		
	Common Name	Concentration	Total
ACTIVE INGREDIENT	Kresoxim-Methyl	30%	30%
INERT INGREDIENT	Others	70%	70%
<b>TOTAL</b>			<b>100%</b>

### **3. HAZARDS IDENTIFICATION**

---

**Flammability:** Not-flammable.

**Human health hazard:** No specific effects or symptoms have been reported.

**Environmental hazard:** Not toxic to aquatic organisms.

### **4. FIRST AID MEASURES**

---

**Health effects: eyes:**

If in eyes, hold eyelids open and wash with copious amounts of clean water for at least 15 minutes.

**Health effects: skin:**

Wash affected areas thoroughly with soap and water.

**Health effects: ingestion:**

Rinse mouth and then drink plenty of water.

**Health effects: inhalation:**

Remove affected person to fresh air until recovered.

### **5. FIRE FIGHTING MEASURES**

---

**Flammability:** Not-flammable.

**Extinguishing media:**

Water fog, foam, carbon dioxide or dry chemical.

Avoid strong water jets - airborne dusts may be an explosion hazard.

**Specific fire fighting methods:**

If area is heavily exposed to fire and if conditions permit, let fire burn itself out since water may increase the area contaminated. Cool containers/tanks with spray water. Dike fire control water for later disposal.

### **6. ACCIDENTAL RELEASE MEASURES**

---

**Personal precautions:**

It is good practice to wear suitable personal protective equipment (PPE). When preparing and using the product wear cotton overalls buttoned to the neck and wrist and a washable hat, elbow-length PVC gloves and face shield.

**Disposal:**

Collect spilled material and waste in sealable open-top type containers for disposal. Recover the product by sweeping up or vacuuming without raising dust.

## **7. HANDLING AND STORAGE**

---

### **Handling and storage: Handling**

Do NOT contaminate dams, rivers or streams, or any other water bodies with pesticide or used containers. Do not apply if heavy rains are imminent.

### **Storage**

Store in the closed, original container in a dry, cool well ventilated area out of direct sunlight. Protect from temperatures above 40°C. Properties of the product may change if stored above this temperature for extended periods.

## **8. EXPOSURE CONTROLS/PERSONAL PROTECTION**

---

### **Exposure control/personal: Engineering Controls**

Handle in well ventilated areas, generally natural ventilation is adequate.

### **Hygiene Measures**

After use and before eating, drinking or smoking, wash hands, arms and face thoroughly with soap and water. After each day's use, wash contaminated clothing and safety equipment.

### **Personal Protective Equipment**

It is good practice to wear suitable personal protective equipment (PPE). When preparing and using the product wear cotton overalls buttoned to the neck and wrist and a washable hat, elbow-length PVC gloves and face shield.

## **9. PHYSICAL AND CHEMICAL PROPERTIES**

---

**APPERANCE** : off-white suspend liquid

**ALKALINITY OR ACIDITY** : pH value:4-7

**SUSPENSIBILITY** : ≥90%

**DENSITY** : 1.0-1.1g/cm<sup>3</sup>

**FLASH POINT** : >100°C

## **10. STABILITY AND REACTIVITY**

---

**Stability:** Stable under normal conditions.

**Conditions to avoid:** Avoid extreme heat and cold. Decomposes at elevated temperatures. Keep out of reach of children.

## **11. TOXICOLOGICAL INFORMATION**

---

**Acute toxicity data (formulated product):** Kresoxim-methyl:

**Acute Toxicity – Oral:** LD50 (rat) >2,000 mg/kg for kresoxim-methyl

**Acute Toxicity –Dermal:** LD50 (rat) >2,000 mg/kg for kresoxim-methyl

**Acute Toxicity – Inhalation:** LC50 (rat) (4hr) >5.6 mg/l for kresoxim-methyl

**Eye Irritation:** Not an eye irritant.

**Skin Irritation:** Not a skin irritant.

**Sensitisation:** Shouldn't cause sensitisation by skin contact.

## **12. ECOLOGICAL INFORMATION**

---

### **Persistence / Degradability**

Average soil half life of kresoxim-methyl is <1 days.

**Acute Toxicity - Fish** The following is data for the active ingredient, kresoxim methyl.

Not toxic to fish.

**Acute Toxicity:**

**Daphnia:** EC50 (48hr) is 0.186 mg/l.

### **Organisms**

Birds: Not toxic to birds. LD50 for quail is >2,150 mg/kg

Bees: Not toxic to bees. LD50 >20 µg/bee.

## **13. DISPOSAL CONSIDERATIONS**

---

### **After intended use:**

Rinse container before disposal. Add rinsings to the spray tank. Do not dispose of undiluted chemicals on site. Break, puncture, crush and bury rinsed container in a local authority landfill (check local statutory requirements). If not available, bury the container below 500 mm in a marked disposal pit specifically set up for this purpose, clear of waterways, vegetation and roots.

Empty container and product should not be burnt.

### **After spill or accident:**

Dispose of sealed containers at an approved local waste disposal site.

#### **14. TRANSPORT INFORMATION**

---

Class: 9  
UN NO.: 3077

#### **15. REGULATORY INFORMATION**

---

**Risk Phrase**

R50/53 low toxic to aquatic organisms.

**Safety Phrase**

S57 Use appropriate containment to avoid environmental contamination.

S2 Keep out of reach of children.

S60 This material and its container must be disposed of as hazardous waste.

**Poisons Schedule** Not Scheduled

#### **16. OTHER INFORMATION**

---

All information and instructions provided in this Material Safety Data Sheet (MSDS) are based on the current state of scientific and technical knowledge at the date indicated on the present MSDS and are presented in good faith and believed to be correct. This information applies to the PRODUCT AS SUCH. In case of new formulations or mixes, it is necessary to ascertain that a new danger will not appear. It is the responsibility of persons on receipt of this MSDS to ensure that the information contained herein is properly read and understood by all people who may use, handle, dispose or in any way come in contact with the product. If the recipient subsequently produce formulations containing this product, it is the recipients sole responsibility to ensure the transfer of all relevant information from this MSDS to their own MSDS.