

**MATERIAL SAFETY DATA SHEET**

**LAMBAPHOS**

**(Chlorpyrifos-M 50% + Lambda Cyhalothrin 0.5% EC)**

**SECTION 1. IDENTIFICATION OF THE SUBSTANCE**

1.1 Identification of Substance

-Product Name : Chlorpyrifos-M + Lambda Cyhalothrin 50.5% EC

**a)Chloropyrophos:**

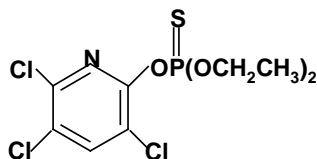
-CAS No : 2921-88-2

-Chemical Name: O,O-diethyl O-3,5,6-trichloro-2-pyridyl phosphorothioate

-Formula: : C<sub>9</sub>H<sub>11</sub>Cl<sub>3</sub>NO<sub>3</sub>PS

-Mol. wt: : 350.6

-Structure:



**B)Lambda-cyhalothrin**

-CAS No: 91465-08-6

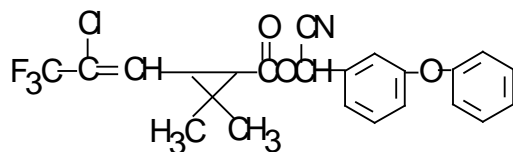
-Chemical Name:

(S)- α -cyano-3-phenoxybenzyl (Z)-(1R,3R)-3-(2-chloro-3,3,3-trifluoropropenyl)-2,2,-dimethylcyclopropanecarboxylate and (R)- α -cyano-3-phenoxybenzyl (Z)- (1S,3S)-3-(2-chloro-3,3,3-trifluoropropenyl)-2,2,-dimethylcyclopropanecarboxylate.

-Formula: C<sub>23</sub>H<sub>19</sub>ClF<sub>3</sub>NO<sub>3</sub>

-Mol. wt: 449.9

-Structure



**SECTION 2. COMPOSITION/INFORMATION ON INGREDIENTS**

Substance	Conc.	Uses
<b>Inert ingredient</b>		
Chlorpyrifos-Methyl	50%	To control of Crawling insects
Lambda-Cyhalothrin	0.5%	
<b>Inert ingredient</b>		
Surfactant	10-12%	
Solvent	Up to 100%	
TOTAL	100%	

### SECTION 3. HAZARDS IDENTIFICATION

#### EFFECTS OF OVEREXPOSURE

Signs and symptoms of excessive exposure to this product may be headache, dizziness, in-coordination, muscle twitching, tremors, nausea, abdominal cramps, diarrhea, sweating, pinpoint pupils, blurred vision, salivation, tearing, tightness in chest.

#### SECTION 4.FIRST AID MEASURES

Ingestion	If victim is conscious and alert, give 2-3 glasses of water to drink and induce vomiting by toughing back of throat with finger. Do not induce vomiting or give anything by mouth to an unconscious person. Seek immediate medical attention.
Eye	rinse with water for 15-20minutes.
Skin	Rinse skin immediately with plenty of water for 15-20 minutes.
Inhalation	If inhaled, move person to fresh air. If person is not breathing, give artificial respiration, preferably mouth-to-mouth if possible.
Note to physician	None known.

#### SECTION 5.FIRE FIGHTING MEASURES

<b>Flammability:</b>	Not flammable under normal use
<b>Extinguishing media:</b>	Foam, Carbon dioxide, Dry chemical
<b>Thermal decomposition products:</b>	Non known
<b>Special fire fighting methods:</b>	Use self contained breathing apparatus
<b>Unusual fire or explosion hazards:</b>	

Thermal decomposition products may include, but are not limited to, Carbon Monoxide and Carbon Dioxide. This product is combustible liquid.

#### SECTION 6.ACIDENTAL RELEASE MEASURES

Use appropriate protective equipment. Spills should be cleaned up immediately.  
Large spill: dike and pump as much as possible to a salvage container. Absorb the

remaining liquid and any small spills with clay granules, sand or other absorbent material and sweep to a waste container. Cover the spill area with water and absorb. Minimize runoff into waterways or drains.

## SECTION 7.HANDLING AND STORAGE

---

Store the material in a well ventilated, secure area out of reach of children and domestic animals. Do not store food, drink in areas where they may become contaminated with this material. Keep container tightly closed. Keep away from heat, sparks and flames. Wash thoroughly after handling.

## SECTION 8.EXPOSURE CONTROL/PERSONAL PROTECTION

---

### **Applicators and other handlers must wear:**

Coveralls over short-sleeved shirt and short pants.

Chemical-resistant footwear plus socks.

Chemical-resistant gloves, such as barrier laminate or butyl rubber.

Protective eyewear.

## SECTION 9. PHYSICAL AND CHEMICAL PROPERTIES

---

-Appearance:	liquid yellow
-Density:	1.07 g/cm <sup>3</sup>
-Corrosion:	Non-corrosive
-Solubility:	In water 1.4mg/l (25°C) (tech) .
-Acidity:	0.21 g/Kg as H <sub>2</sub> SO <sub>4</sub>
-pH:	4.1

**Storage stability : Accepted** SECTION 10.STABILITY AND REACTIVITY

---

Chemical Stability: Stable at normal temperatures and storage conditions.

Condition to avoid: Extremely heat

Materials to avoid: Strong oxidizers

Polymerization: Polymerization will not occur.

### **Hazardous decomposition products:**

Maybe release toxic gas.

## SECTION 11.TOXICOLOGICAL INFORMATION

---

Ingestion:	Acute Oral LD50 for rats >1000 mg/kg
Dermal:	Acute Dermal LD50 for rabbits >3000mg/kg
Skin contact:	Mild irritating to skin (rabbits)

Eye contact:	Mild irritating to eye (rabbits)
Skin sensitization:	No test
Other:	Non-mutagenic, non-teratogenic; no adverse effect on reproductive performance. Not neu-rototoxic.
Toxicity class:	Chlorpyrifos: WHO (A.I.) II; EPA II Lambdacyhalothrine: WHO (A.I.) II; EPA II

## **SECTION 12. ECOLOGICAL INFORMATION**

---

This product is highly toxic to birds, fish and honeybee, Moderately toxic to pets and livestock, and low toxic to earthworm. Chlorpyrifos does not bio-accumulate in animal systems. Keep out of lakes, streams, ponds, tidal marshes, and estuaries. Do not contaminate water by cleaning of equipment or disposal of equipment wash water.

## **SECTION 13. DISPOSAL INSTRUCTION**

---

Do not contaminate water, food, or feed by storage or disposal. Pesticide wastes are acutely hazardous. Triple rinse (or equivalent) the container. Then offer for recycling or reconditioning. If allowed by state and local authorities, by burning. If burned, stay out of smoke.

## **SECTION 14. TRANSPORT INFORMATION**

---

No UN No. can be available. Should be transported or stored in clearly labeled rigid and leak-proof containers, under lock and key, secure from access by unauthorized persons and children. No food or drink should be transported or stored in the same compartment.

## **SECTION 15. REGULATORY INFORMATION**

---

Acute: No  
Chronic: No  
Fire: Yes  
Reactivity: No

Read and follow all label directions.

## **SECTION 16. OTHER INFORMATION**

---

The data given here is based on current knowledge and experience. The purpose of this safety data sheet is to describe the products in terms of their safety requirements.